

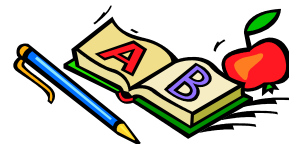
Full/Half Day Programs



2016/2017

SEPTEMBER

1 (Thurs) Open classroom visitation (for children)
10:00 am – 1:00 pm



6 (Tues) First day of school (2 & 5 days)

6 (Tues) General parent's meeting — 7 pm (**for adults only**)

7 (Weds) First day of school (3 days)



OCTOBER

TBA *Trip to Pumpkin Farm – (all programs)
School open before & after trip — **NO RAIN DATE**

ALL CHILDREN MUST BRING A PARENT OR SPECIAL PERSON ON THIS DAY

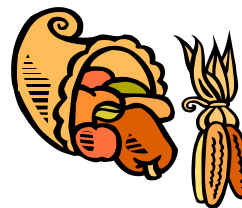
31 (Mon) Halloween party and parade — ALL CLASSES
Parade @ 11:00 am



NOVEMBER

24 (Thurs) **NO SCHOOL** (Thanksgiving Day)

25 (Fri) **NO SCHOOL**



DECEMBER

21 (Weds) Holiday celebrations – in classroom

26 thru 30 **NO SCHOOL (Winter Recess)** *return Monday, Jan 2*



over >

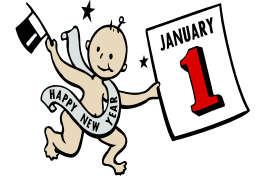
Full/Half Day Programs



2016/2017

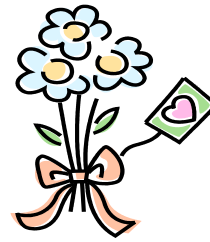
JANUARY

- 2 (Mon) Classes resume
TBA Conferences – (all day starting 8:30 am — 4:45 pm)



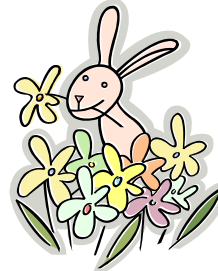
FEBRUARY

- TBA Class pictures
20 (Mon) President's day - **No school**



APRIL

- 14 & 17 Spring Break
(Fri & Mon)



MAY

- TBA Class Trip
TBA Conferences (all day starting 8:30 am — 4:45 pm)
29 (Mon) Memorial Day - **No school**



JUNE

- 7 (Weds) Picnic (12 noon - 2 pm) - All programs
Child must bring a parent or special person on this day.
School is closed during picnic hours.
- 21 (Weds) Kindergarten graduation —7 pm; **School is open all day**
- 23 (Fri) Graduation for "Kindergarten Bound" preschoolers - 7 pm
School is OPEN all day
- 30 (Fri) **Last day of school**

